

**MUNI | RECETOX**

# **Making the invisible visible - how to push sustainable development into our daily activities/life**

**Kateřina Šebková, RECETOX, Masaryk University, Czech Republic [www.recetox.muni.cz](http://www.recetox.muni.cz)**

# Vision **versus** reality

## What is the European Green Deal?

December 2019  
#EUGreenDeal

The European Green Deal is about **improving the well-being of people**. Making Europe climate-neutral and protecting our natural habitat will be good for people, planet and economy. No one will be left behind.

### The EU will:



Become climate-neutral by 2050



Protect human life, animals and plants, by cutting pollution



Help companies become world leaders in clean products and technologies



Help ensure a just and inclusive transition

# Vision versus reality

- life of many has changed since 24 February 2022 - it is 239 days today
- some steps can be planned, but if external pressures increase...
- in the middle of the conflict we change our personal, local...national ... global priority list
- adaptation is inevitable and happens
- we are in the transformation that is much deeper than we think
- but it is opportunity, solution and to a great extent “light of hope”
- previous principles, approaches, visions are still valid, but implementation may alter

**How vulnerable are we?**

# Triple planetary crisis - since 2021

climate change  
nature+ biodiversity loss  
and pollution

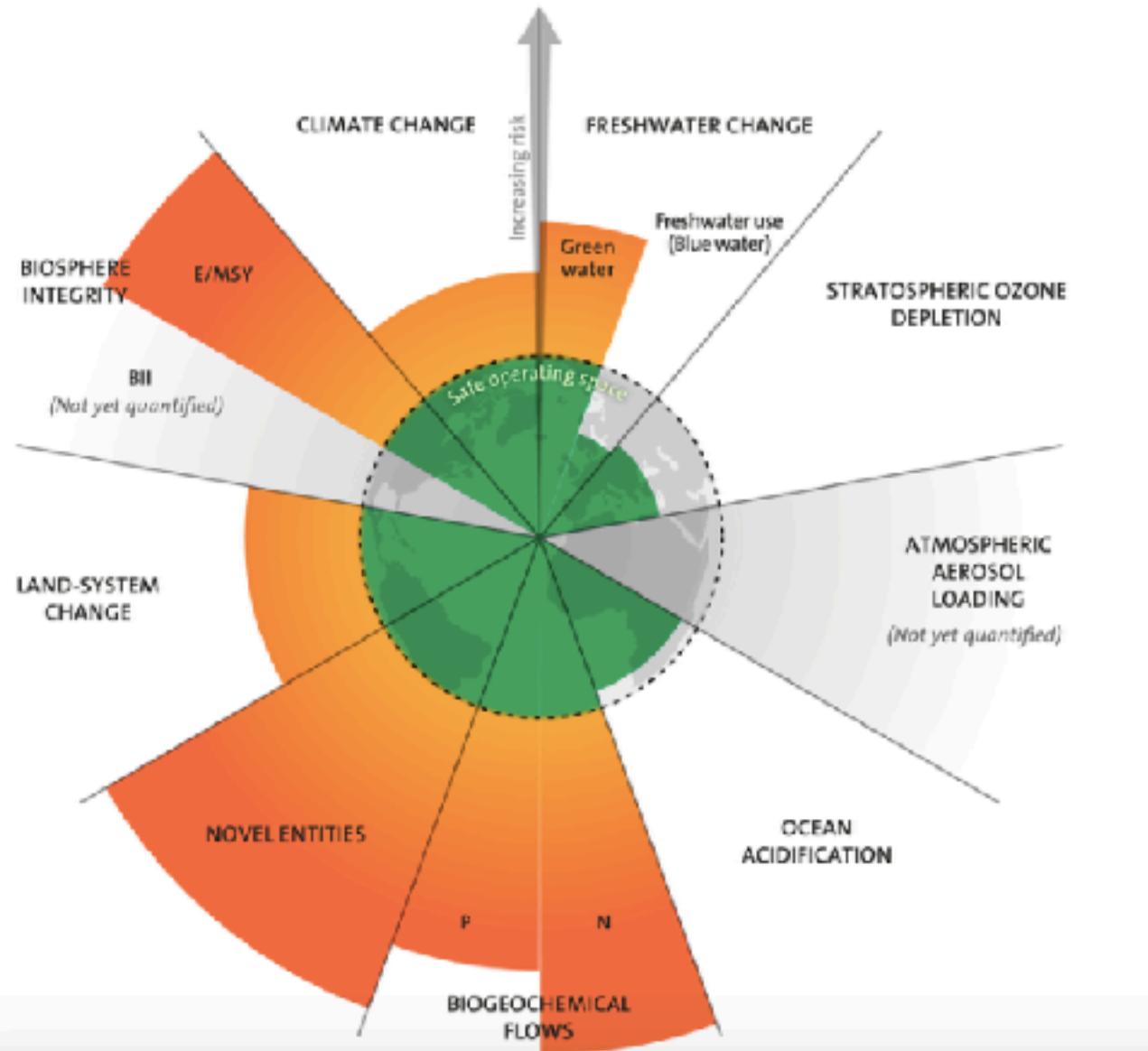
...have to be addressed in an  
integrated manner and urgently

<https://www.unep.org/news-and-stories/speech/leap-forward-environmental-action> (at close of  
UNEA 5 in March 2022)



UNEP Executive Director, Inger Andersen

# Planetary boundaries are reevaluated (April 2022)

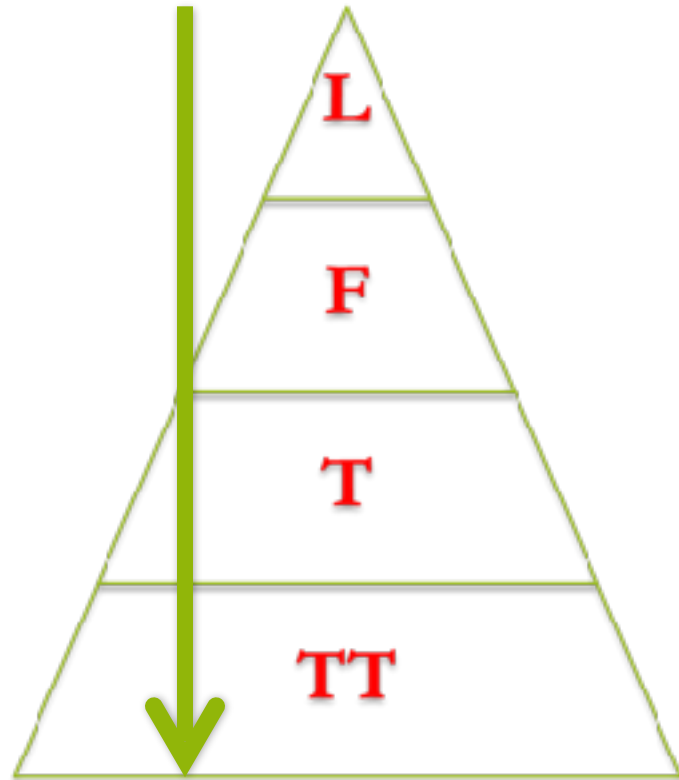


Wang-Erlandsson, L., Tobian, A., van der Ent, R. J., Fetzer, I., te Wierik, S., Porkka, M., Staal, A., Jaramillo, F., Dahlmann, H., Singh, C., Greve, P., Gerten, D., Keys, P.W., Gleeson, T, Cornell, S. E., Steffen, W., Bai, X., Rockström, J., (2022). A planetary boundary for green water. *Nature Reviews Earth & Environment*. <https://doi.org/10.1038/s43017-022-00287-8>

# Is there a choice? YES!

- we need transformational change at all levels
- not only systemic and visionary supported by policies and legislation
- but also... technological and also ownership, personal ownership..
- principles established are still valid - we need to look closer at the sustainability and implement it

# Recent past – turn of 20th a 21st century - principles of environmentally sound management



Legislation

Financial tools

Market

Technics and technologies



# Sustainability – what it is?

↪ No product is fully sustainable.

↪ It is possible to define sustainability as an approach.

↪ A product can be more or less sustainable.

↪ People can act sustainably.



# What is sustainable development?

## Sustainable Development

is a development that meets the needs of the **present** without compromising the ability of **future** generations to meet their own needs.

## Sustainable Consumption

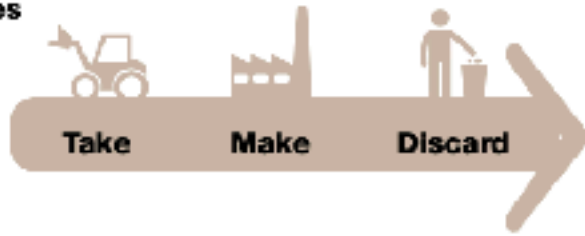
is the **use of services and related products** which respond to basic needs and bring a better quality of life while **minimizing the use of natural resources and toxic materials as well as the emissions of waste and pollutants over the life cycle of the service or product** so as not to jeopardize the needs of **future** generations.

# Where are we?

- deep inequalities
- our civilization on Earth exceeds consumption of all resources we have:
- biodiversity
- energy
- ... and produces much more waste than it is able to handle globally
- and still have “historic” challenges on our plate = decades of pollution
- tripple planetary crisis, yes, we are in the middle of it

## Where we are coming from: The linear economy and waste management

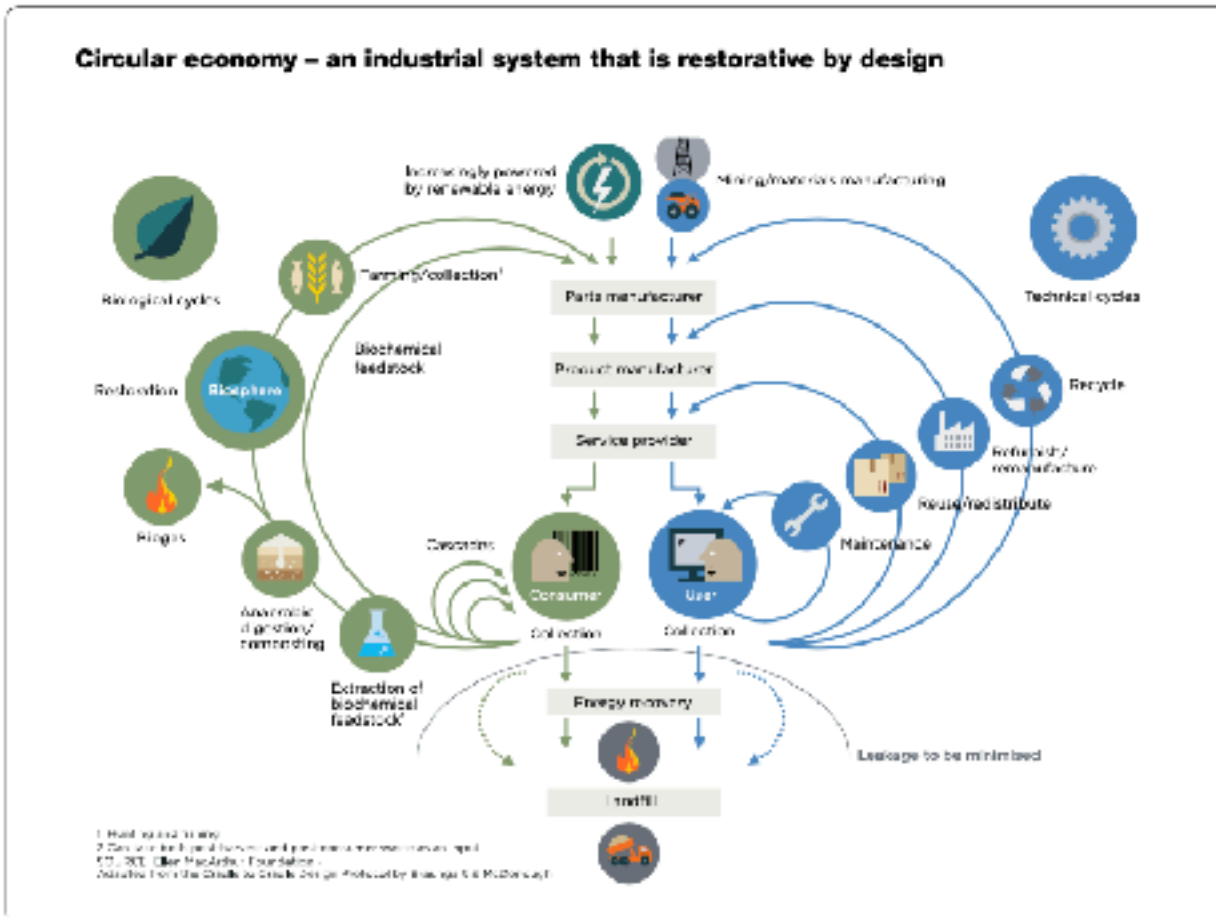
### Natural resources



### Waste disposal



## Where we need to get to: Resource management within a circular economy



# Is Circular Economy a solution ?

## current/long term challenges

- over-production/over-consumption
- ever increasing waste generation
- linear waste management schemes/landfilling
- recycling of hazardous materials/components still exist!
- continued risk to environment and vulnerable populations
- lack of waste management schemes in LMICs/informal sector

larger image:

**biosphere (food waste/food safety)** - need to implement the same approach as in technosphere  
**technosphere (recycling)** = is being implemented last 15 yrs

**energy recovery is the last step of both streams!**

**MUNI | RECETOX**

reproduced from UNEP's Global Waste Management Outlook

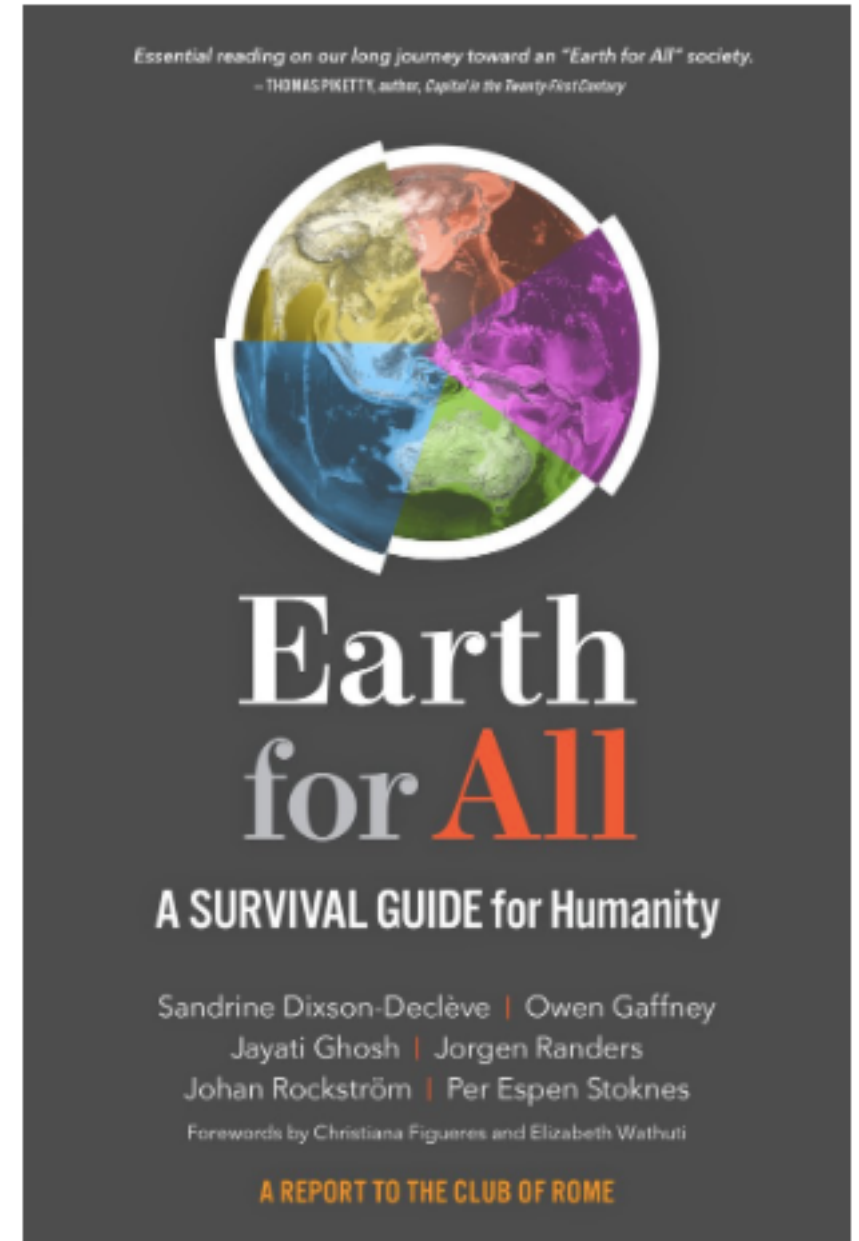
Source: Ellen MacArthur Foundation (2013) (<http://www.ellenmacarthurfoundation.org/circular-economy/circular-economy/interactive-system-diagram>).

# Available solutions?

- yes, some global instruments to address triple planetary crisis and promote sustainable development goals and principles
- they push governments to act
- Multilateral environmental agreements addressing
  - Climate change and its adaptations: UNFCCC
  - Biodiversity: CBD
  - Pollution: Basel, Rotterdam, Stockholm and Minamata Convention, Montreal Protocol, SAICM
- but the implementation is not fast enough, however the instruments work

# Available solutions?

- published in September 2022 - new attempt to practical understanding of necessary transformation steps
- results of a two-year research project, Earth4All (The Club of Rome, the Potsdam Institute for Climate Impact Research, the Stockholm Resilience Centre and the Norwegian Business School BI)
- and explores two scenarios beginning in 1980 and ending in 2100 (Too-little-too-late and the Giant Leap)
- Netflix series on planetary boundaries and sustainability



# Other possibilities - more personal, indeed

- transition to more sustainable behaviour
- sustainable mobility - use more public transport, walking, cycling
- sustainable consumption - how much waste do I generate? Where does it go? Can I do something to reduce?
- segregate and recycle your waste
- did you know that more than 50% of municipal solid waste is food/organic waste?
- what about packaging materials? How much do you get/produce?
- push for personal, local, district in a city level solutions

# Other possibilities - more personal, indeed

- Households are responsible for 2/3 of greenhouse gas emissions
- Food systems are responsible for 80% of biodiversity loss
- eat more plants, waste less food, buy LOCAL and organic
- Buy only what you need
- Reduce waste
- Share and repair
- reduce cooling and heating + consider renewable sources for energy



# HERA agenda: SIX Research Goals

**REDUCE**  
1

**Climate change and biodiversity loss**

Reduce effects on health and the environment

**PROMOTE**  
2

**Cities and communities**

Promote healthy lives in sustainable and inclusive societies

**PREVENT**  
3

**Chemicals and physical stressors**

Prevent and eliminate harmful chemical exposures to health

**IMPROVE**  
4

**Improve health impact assessment**

of environmental factors and promote implementation research

**DEVELOP**  
5

Develop **infrastructures, technologies and human resources**

for sustainable research on environment, climate change and health

**TRANSFORM**  
6

Promote research on **transformational change**

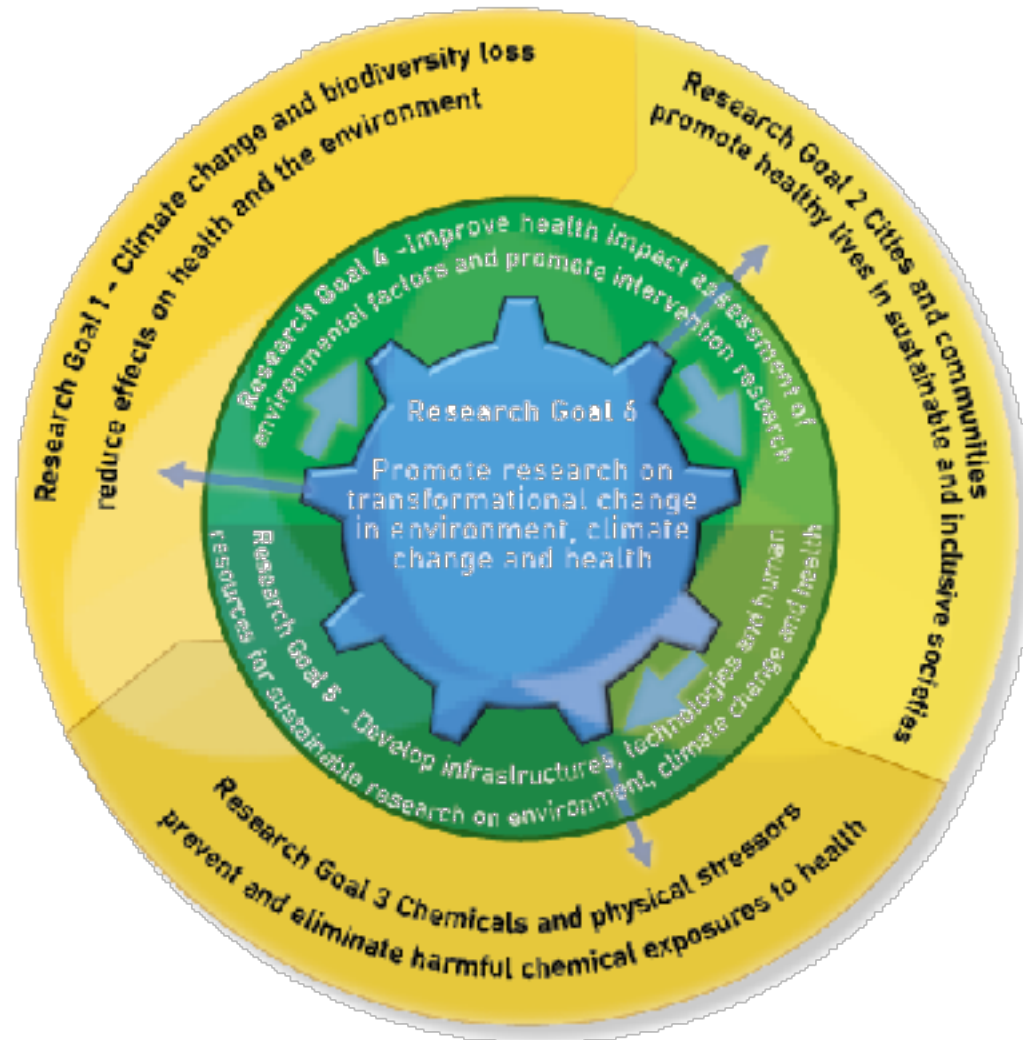
in environment, climate change and health

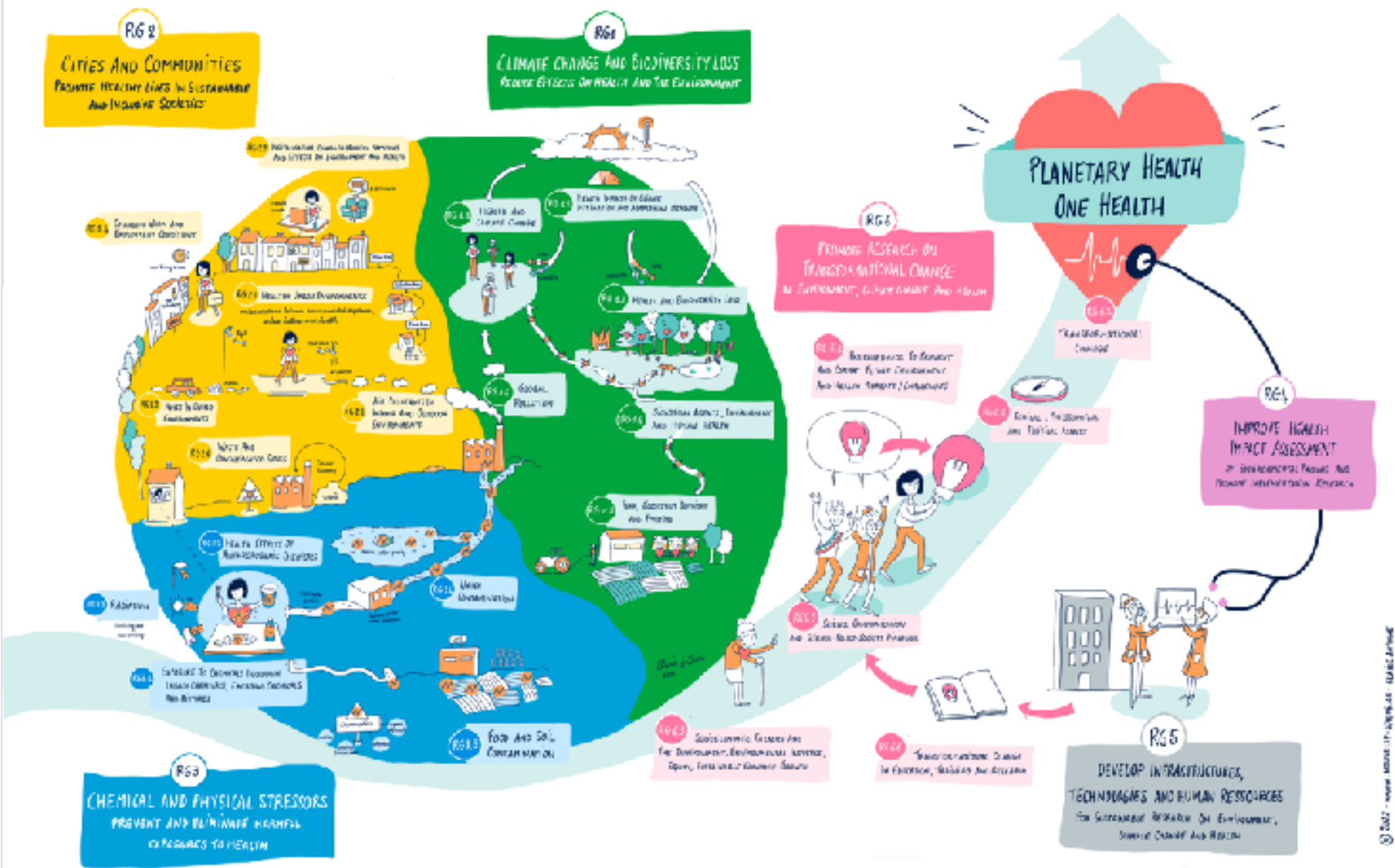
# Research Goals Interaction

RG1, RG2, RG3:  
Exposures and  
health effects

RG4, RG5:  
Methodologies  
and  
Infrastructures

RG6.  
Societal  
Transformation





# REFERENCES

- Emission Gap Report (Chapter 6), UNEP, 2020
- <https://www.anatomyofaction.org>
- Enabling Sustainable Lifestyles in a Climate Emergency, UNEP, 2022
- UNEP 2015: Global Waste Management Outlook <https://www.unep.org/resources/report/global-waste-management-outlook>
- [www.heraresearch.eu](http://www.heraresearch.eu)
- ISWA and D-waste <https://wastelessfuture.com/reportspapers/>

**MUNI | RECETOX**

**Thank you for your kind attention!**

[katerina.sebkova@recetox.muni.cz](mailto:katerina.sebkova@recetox.muni.cz)